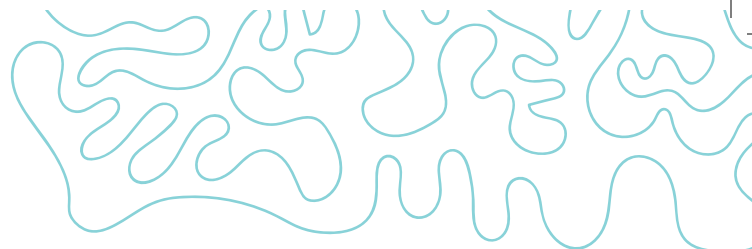




BIXBY CHOCOLATE



Needhams



The choice is yours!

Interested in ordering?

Email: orders@bixbychocolate.com Call: 207-691-2634

**Needhams
2 Piece**

INGREDIENTS: DARK CHOCOLATE (SUGAR, CHOCOLATE LIQUOR, COCOA BUTTER, SOY LECITHIN [AN EMULSIFIER], VANILLA) DESICCATED COCONUT, INVERT SUGAR, GLUCOSE SYRUP, COCOA BUTTER, PURE VANILLA EXTRACT, CITRIC ACID, POTATO. **CONTAINS:** TREE NUTS (COCONUT), SOY.



NON-GMO



**Needhams
4 Piece**

INGREDIENTS: DARK CHOCOLATE (SUGAR, CHOCOLATE LIQUOR, COCOA BUTTER, SOY LECITHIN [AN EMULSIFIER], VANILLA) DESICCATED COCONUT, INVERT SUGAR, GLUCOSE SYRUP, COCOA BUTTER, PURE VANILLA EXTRACT, CITRIC ACID, POTATO. **CONTAINS:** TREE NUTS (COCONUT), SOY.



NON-GMO



THE WAY CHOCOLATE SHOULD BE...

Take a journey and indulge in the wonders of artisan chocolate. At Bixby & Co. we make our chocolates from scratch in small batches. This “bean to bar” method preserves the unique and complex flavor notes of our single-origin cacao beans. Located on the coast of Maine, we are proud to continue a maritime tradition of bringing the best to Maine—and bringing exceptional chocolates to you!



BIXBY CHOCOLATE

One Sea Street Place
Rockland, Maine
04841

207-691-2634
orders@bixbychocolate.com
BIXBYCHOCOLATE.COM



WOMEN OWNED

